



## Riffle Beetle Larva



- ◆ Small crunchy, comma shaped body, up to 1/2 inch
- ◆ 3 pairs of segmented legs
- ◆ Gills and 2 hooks on posterior end

## Riffle Beetle Adult



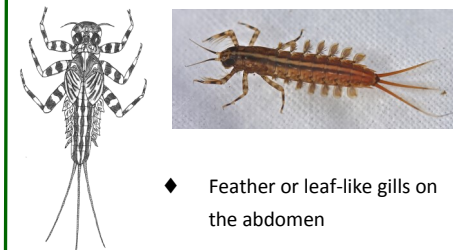
- ◆ Oblong beetle shape, long antennae
- ◆ Small, 1/16 - 1/8 of an inch
- ◆ Walks slowly underwater, doesn't swim on surface

## Water Penny



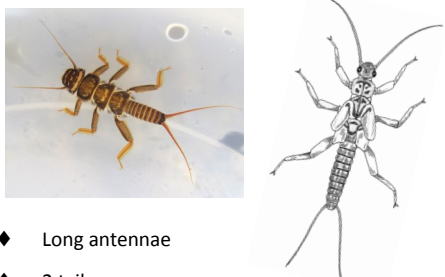
- ◆ Flat saucer-shaped body
- ◆ 3 tiny pairs of legs on the underside
- ◆ Up to 1/2 inch

## Mayfly



- ◆ Feather or leaf-like gills on the abdomen
- ◆ Typically has 3 tails
- ◆ 3 pairs of segmented legs

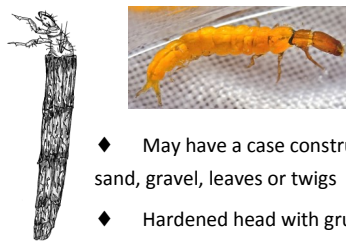
## Stonefly



- ◆ Long antennae
- ◆ 2 tails
- ◆ No gills on abdomen
- ◆ 3 pairs of segmented legs

## Caddisflies

### (Case-making/Free living)



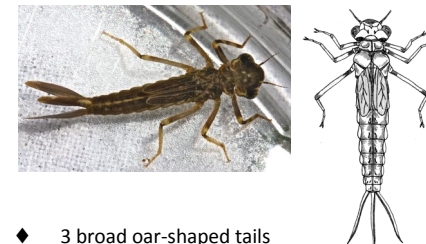
- ◆ May have a case constructed of sand, gravel, leaves or twigs
- ◆ Hardened head with grub-like soft body
- ◆ 3 pairs of segmented legs with hooks on the posterior

## Common Net Spinning Caddisfly



- ◆ Head and first three thoraxes are hardened
- ◆ 2 fleshy, hairy hooks on the posterior
- ◆ 3 pairs of segmented legs
- ◆ Gill tufts on abdomen

## Damselfly



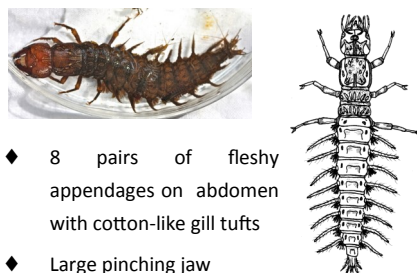
- ◆ 3 broad oar-shaped tails
- ◆ Long, narrow body with no gills on abdomen
- ◆ 3 pairs of spindly segmented legs

## Dragonfly



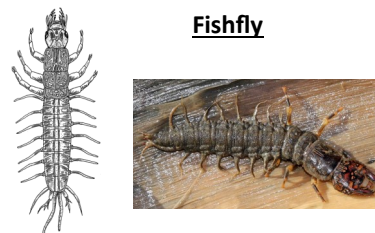
- ◆ Oval/round abdomen (may be wider than it is tall)
- ◆ Large eyes
- ◆ 3 pairs of segment legs

## Dobsonfly (Hellgrammite)



- ◆ 8 pairs of fleshy appendages on abdomen with cotton-like gill tufts
- ◆ Large pinching jaw

## Fishfly



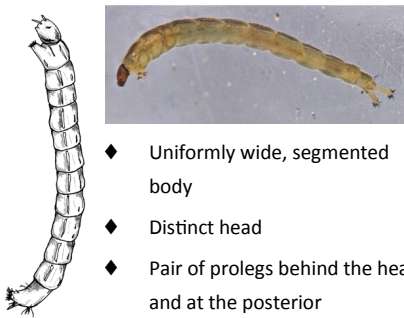
- ◆ 8 pairs of fleshy appendages on abdomen
- ◆ No gill tufts
- ◆ Forked posterior with 2 fleshy tails

## Alderfly



- ◆ 7 pairs of fleshy appendages on abdomen, no gill tufts
- ◆ One long thin branched tail

## Midge



- ◆ Uniformly wide, segmented body
- ◆ Distinct head
- ◆ Pair of prolegs behind the head and at the posterior
- ◆ Up to 1/4 inch

## Crayfish



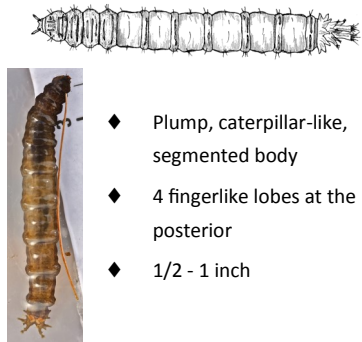
- ◆ Lobster-like body
- ◆ Two large claws near the head
- ◆ 1/2 - 5 inches

## Gilled Snail



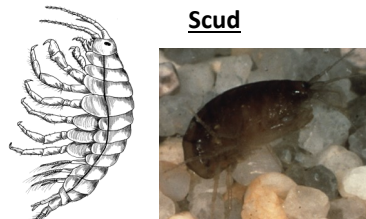
- ◆ Shell opens to the right (dextral) - when holding the shell with the narrow end pointing up and the opening facing you
- ◆ Has an operculum (thin plate covering the shell opening)

## Crane Fly



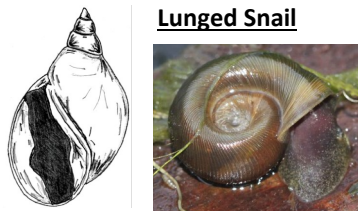
- ◆ Plump, caterpillar-like, segmented body
- ◆ 4 fingerlike lobes at the posterior
- ◆ 1/2 - 1 inch

## Scud



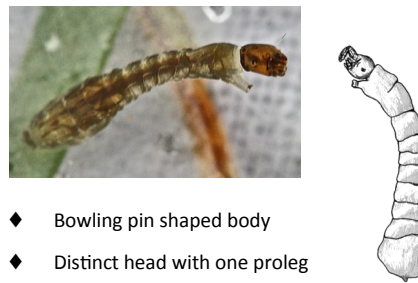
- ◆ Shrimp-like body, no hard covering
- ◆ Long antennae
- ◆ 7 pairs of legs
- ◆ Swims quickly on its side

## Lunged Snail



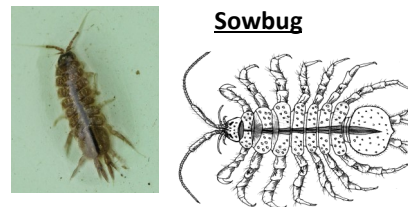
- ◆ Shell opens to the left - when holding the shell with the narrow end pointing up and the opening facing you
- ◆ No operculum
- ◆ Shell might be in a coiled shape

## Black Fly



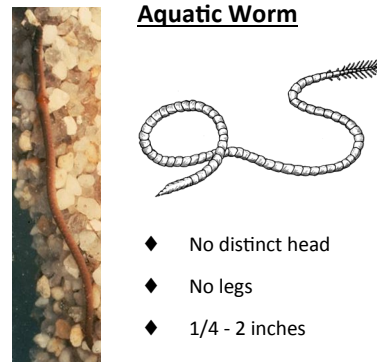
- ◆ Bowling pin shaped body
- ◆ Distinct head with one proleg directly underneath
- ◆ Up to 1/4 inch

## Sowbug



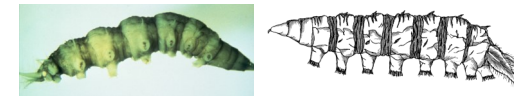
- ◆ Oblong body
- ◆ 2 pairs of antennae, one longer than the other
- ◆ Armor-like appearance

## Aquatic Worm



- ◆ No distinct head
- ◆ No legs
- ◆ 1/4 - 2 inches

## Water Snipe



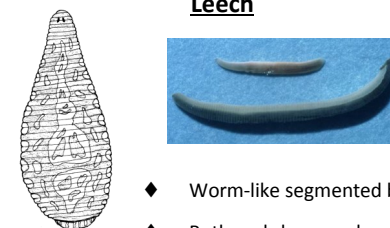
- ◆ Soft, fleshy body with tapered ends
- ◆ Caterpillar-like legs
- ◆ 2 feathery 'horns' at the posterior

## Clams & Mussels



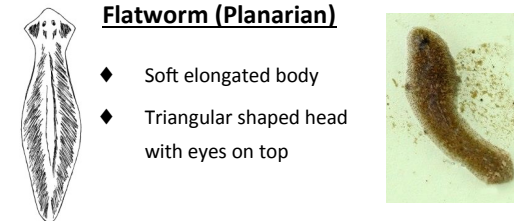
- ◆ Fleshy body enclosed between two-hinged shells
- ◆ 1/8 - 5 inches

## Leech



- ◆ Worm-like segmented body
- ◆ Both ends have suckers
- ◆ 1/4 - 2 inches

## Flatworm (Planarian)



- ◆ Soft elongated body
- ◆ Triangular shaped head with eyes on top